



# Waterwegen en Zeekanaal NV

**Ir. Leo Clinckers**  
**Managing Director (CEO)**  
**Waterwegen & Zeekanaal NV**



# Waterwegen en Zeekanaal NV



Waterwegen en Zeekanaal NV  
weg van water

the Blue Road map



**the Blue Road**  
duurzaam vervoer over water

Bureau Voorlichting Binnenvaart

-  Belangrijkste containerterminals
-  Belangrijkste overslaghavens

# Waterwegen en Zeekanaal NV



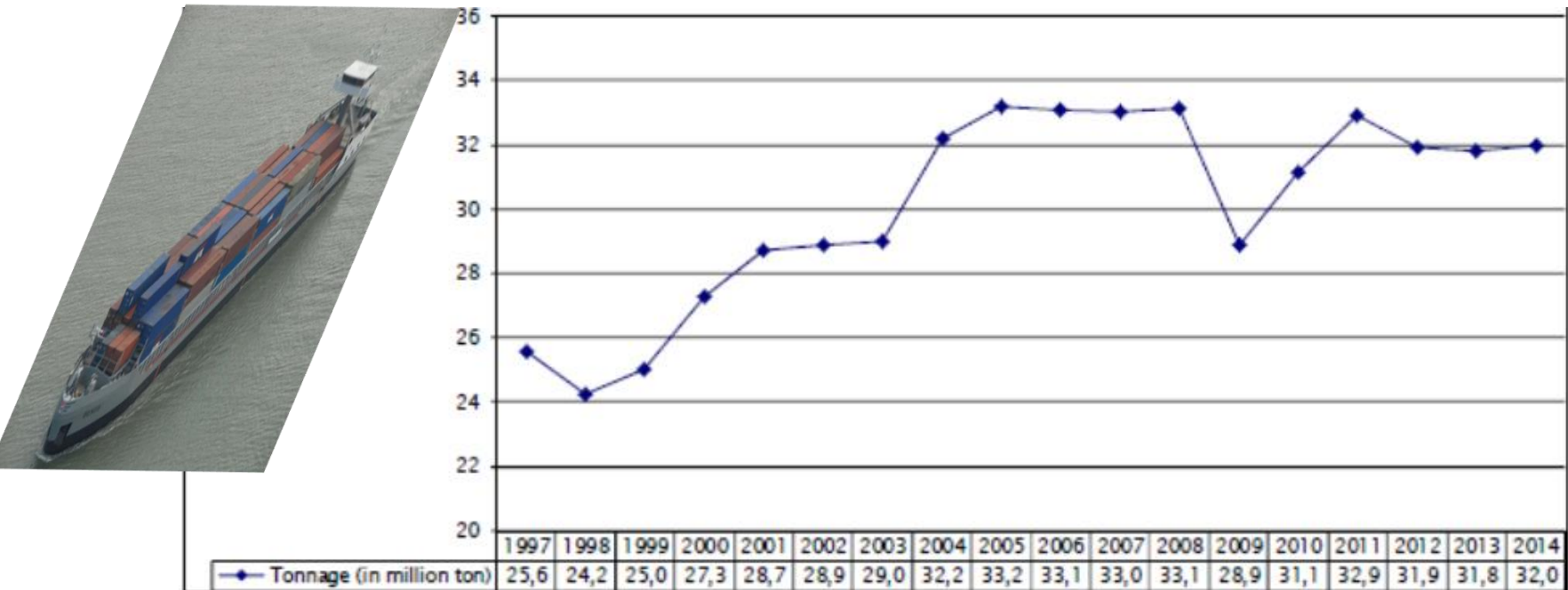
Waterwegen en Zeekanaal NV

weg van water

	Klasse I	250 - 400 T
	Klasse II	400 - 650 T
	Klasse IV	1000 - 1500 T
	Klasse V	1500 - 6000 T
	Klasse VI	3200 - 18000 T
	Verbod door te varen	
	Sluis	



Total Amount of cargo transport (tonnage) in Flanders on the inland waterways in management of Waterwegen en Zeekanaal, 1997-2014



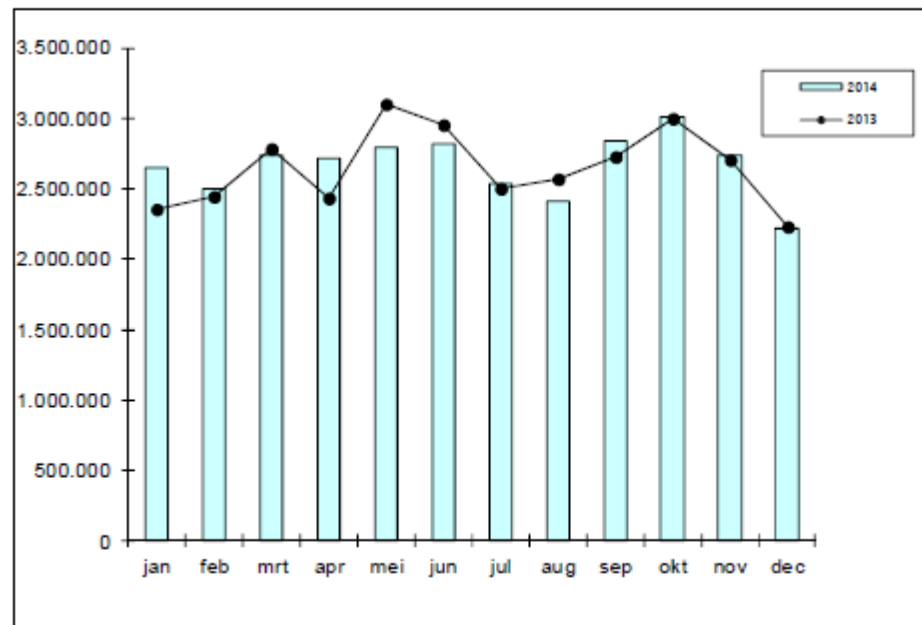
# Waterwegen en Zeekanaal NV



Waterwegen en Zeekanaal NV  
weg van water



	2012	2013	2014	eff. groei	% groei
jan	2.571.176	2.349.397	2.648.814	+299.417	+12,74%
feb	2.397.092	2.448.437	2.498.555	+50.118	+2,05%
mrt	3.002.779	2.784.388	2.738.224	-46.164	-1,66%
apr	2.694.051	2.435.824	2.712.698	+276.874	+11,37%
mei	2.872.859	3.094.883	2.799.839	-295.044	-9,53%
jun	2.985.039	2.953.862	2.814.826	-139.036	-4,71%
jul	2.411.399	2.505.362	2.537.862	+32.500	+1,30%
aug	2.540.857	2.567.133	2.412.196	-154.937	-6,04%
sep	2.790.095	2.729.027	2.840.691	+111.664	+4,09%
okt	2.812.452	2.995.577	3.011.489	+15.912	+0,53%
nov	2.665.855	2.703.958	2.738.624	+34.666	+1,28%
dec	2.156.908	2.226.348	2.217.799	-8.549	-0,38%
<b>TOTAAL</b>	<b>31.900.562</b>	<b>31.794.196</b>	<b>31.971.617</b>	<b>+177.421</b>	<b>+0,56%</b>



# Waterwegen en Zeekanaal NV



Waterwegen en Zeekanaal NV  
weg van water



# Waterwegen en Zeekanaal NV







## ILDE CONFERENCE PROGRAM (sequel)

<b>10.20 - 10.50</b>	<b>Results of the study on the market potential, Karel Vanroye, Director, Buck Consultants International</b>
<b>10.50 - 11.20</b>	Assessing the needs of the stakeholders- Buck Consultants International
<b>11.20 - 11.30</b>	Introduction of Port of Baja
<b>11.30 - 11.40</b>	Introduction of the Hungarian Federation of Inland Ports
<b>11.40 - 11.50</b>	Introduction of a metalworking company from Baja
<b>11.50 - 12.00</b>	Introduction of an agricultural machines trading company from Baja
<b>12.30 – 14.00</b>	Lunch (Véndió Restaurant, Petőfi-island)