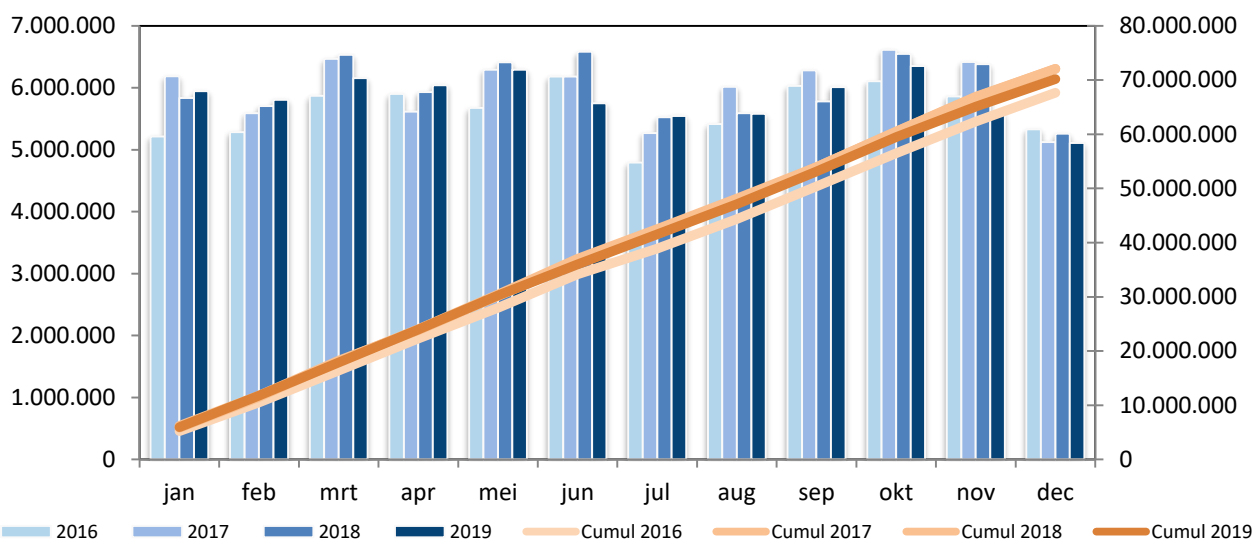


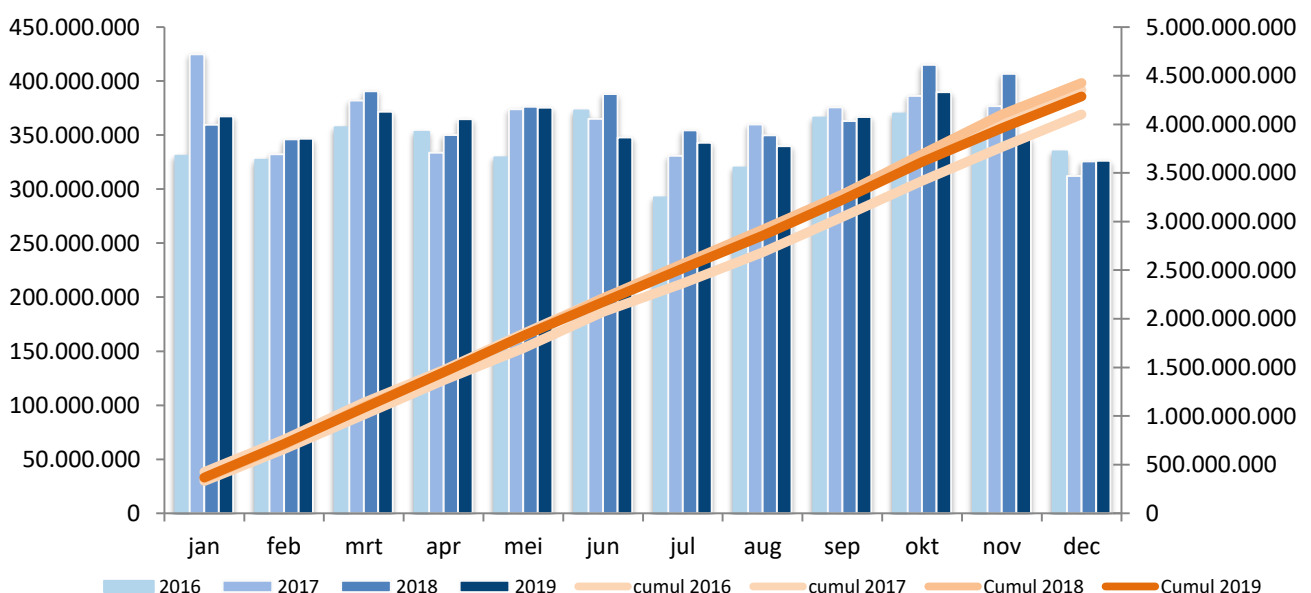
Algemeen

| omschrijving | december 2019 | december 2018 | verhouding | cumul 2019 | cumul 2018 | verhouding |
|----------------------------|------------------|------------------|------------|---------------|---------------|------------|
| tonkilometer (tonkm) | 326.338.000 | 325.577.106 | +0,23% | 4.286.839.169 | 4.425.619.625 | -3,14% |
| tonnage (ton) | 5.106.854 | 5.260.239 | -2,92% | 70.179.629 | 72.081.064 | -2,64% |
| ladingen (ton) | 903.552 | 838.094 | +7,81% | 12.953.567 | 12.589.250 | +2,89% |
| lossingen (ton) | 2.172.295 | 2.325.117 | -6,57% | 30.906.318 | 31.087.356 | -0,58% |
| vervoerde containers (TEU) | 71.113 | 66.446 | +7,02% | 887.581 | 853.253 | +4,02% |

Vervoerde tonnage

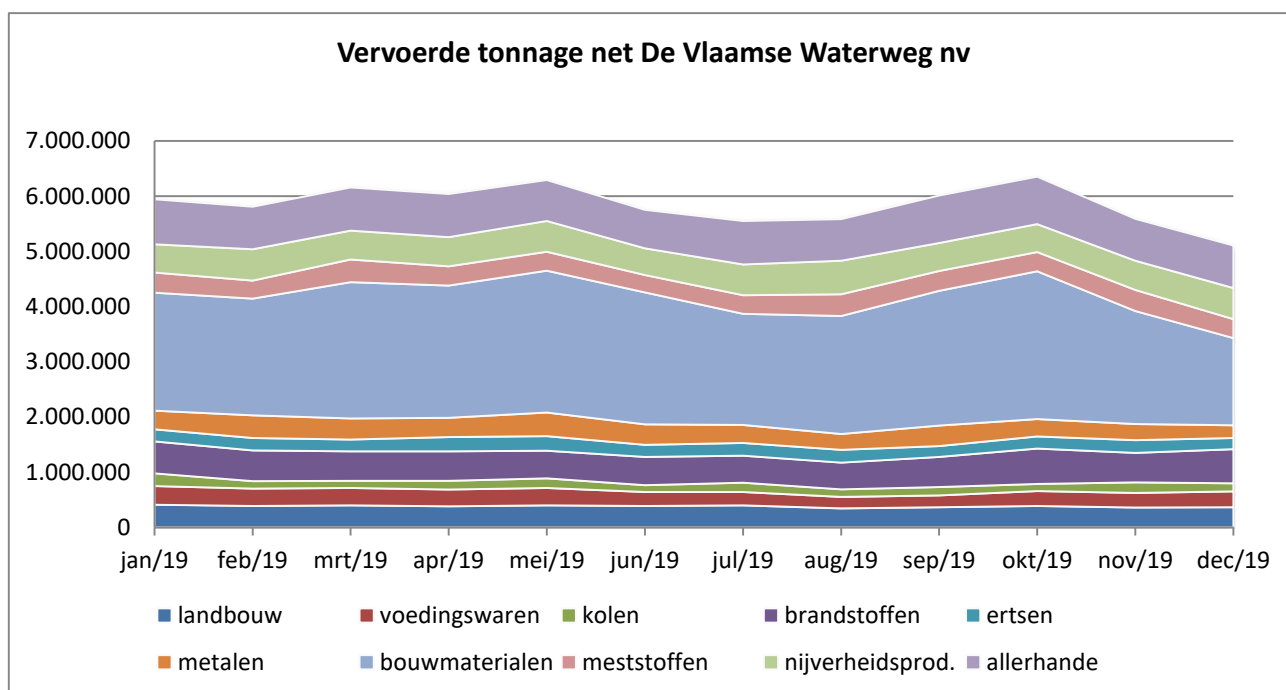


Tonkilometer



Vervoerde tonnage per productgroep (ton)

| omschrijving | december 2019 | december 2018 | verhouding | cumul 2019 | cumul 2018 | verhouding |
|------------------------|------------------|------------------|---------------|-------------------|-------------------|---------------|
| 0 landbouwproducten | 363.604 | 405.560 | -10,35% | 4.567.171 | 5.264.994 | -13,25% |
| 1 voedingswaren | 284.870 | 248.699 | +14,54% | 3.330.795 | 3.354.706 | -0,71% |
| 2 vaste brandstoffen | 146.420 | 125.878 | +16,32% | 1.867.041 | 1.980.131 | -5,71% |
| 3 petroleumproducten | 623.419 | 683.219 | -8,75% | 6.530.884 | 6.816.225 | -4,19% |
| 4 ertsen | 200.550 | 159.911 | +25,41% | 2.715.484 | 2.896.970 | -6,26% |
| 5 metaalproducten | 230.037 | 322.704 | -28,72% | 4.100.171 | 4.582.291 | -10,52% |
| 6 bouwmaterialen | 1.579.229 | 1.722.162 | -8,30% | 26.974.014 | 27.756.014 | -2,82% |
| 7 meststoffen | 343.358 | 301.925 | +13,72% | 4.273.434 | 4.298.451 | -0,58% |
| 8 nijverheidsproducten | 563.704 | 536.938 | +4,98% | 6.436.395 | 6.184.715 | +4,07% |
| 9 allerhande | 771.663 | 753.243 | +2,45% | 9.384.240 | 8.946.567 | +4,89% |
| TOTAAL : | 5.106.854 | 5.260.239 | -2,92% | 70.179.629 | 72.081.064 | -2,64% |



Vervoerde tonnage per corridor

| omschrijving | december 2019 | december 2018 | verhouding | cumul 2019 | cumul 2018 | verhouding |
|--------------------------|------------------|------------------|------------|---------------|---------------|------------|
| Albertkanaal | 2.780.790 | 2.935.717 | -5,28% | 37.217.860 | 38.622.157 | -3,64% |
| Kempische kanalen | 270.988 | 233.926 | +15,84% | 3.972.721 | 3.789.976 | +4,82% |
| ABC-as* | 809.174 | 888.026 | -8,88% | 12.195.530 | 13.178.901 | -7,46% |
| Bovenschedde | 669.808 | 589.069 | +13,71% | 9.456.710 | 9.981.789 | -5,26% |
| Leie** | 769.445 | 779.958 | -1,35% | 10.382.436 | 10.023.762 | +3,58% |
| Kanaal Gent- Oostende*** | 140.508 | 119.413 | +17,67% | 1.756.463 | 1.574.375 | +11,57% |
| Ringvaart om Gent | 1.496.479 | 1.376.014 | +8,75% | 20.331.797 | 20.342.208 | -0,05% |

* Zeekanaal Brussel-Schelde + Kanaal naar Charleroi

** Afdelingskanaal van de Leie + Leie + Grensleie

*** Vanaf splijting afdelingskanaal van de Leie tot Oostende

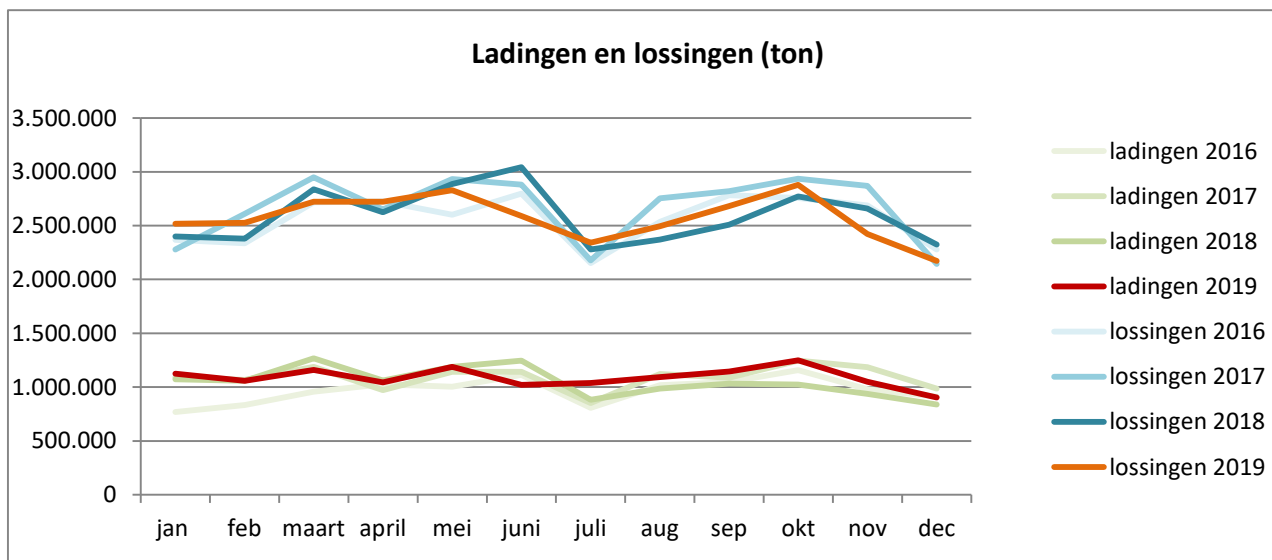
Ladingen en lossingen op het net De Vlaamse Waterweg nv (ton)

Ladingen

| omschrijving | december 2019 | december 2018 | verhouding | cumul 2019 | cumul 2018 | verhouding |
|------------------------|------------------|------------------|---------------|-------------------|-------------------|---------------|
| 0 landbouwproducten | 24.471 | 26.699 | -8,34% | 237.676 | 276.338 | -13,99% |
| 1 voedingswaren | 26.724 | 23.291 | +14,74% | 351.269 | 356.751 | -1,54% |
| 2 vaste brandstoffen | 2.226 | 0 | | 61.987 | 49.572 | +25,04% |
| 3 petroleumproducten | 34.036 | 17.897 | +90,18% | 238.063 | 173.923 | +36,88% |
| 4 ertsen | 44.189 | 37.737 | +17,10% | 711.246 | 727.069 | -2,18% |
| 5 metaalproducten | 12.315 | 18.206 | -32,36% | 208.550 | 316.366 | -34,08% |
| 6 bouwmaterialen | 244.677 | 282.021 | -13,24% | 5.221.507 | 5.419.009 | -3,64% |
| 7 meststoffen | 31.632 | 20.665 | +53,07% | 398.206 | 316.229 | +25,92% |
| 8 nijverheidsproducten | 102.374 | 74.666 | +37,11% | 1.164.935 | 977.853 | +19,13% |
| 9 allerhande | 380.908 | 336.912 | +13,06% | 4.360.128 | 3.976.140 | +9,66% |
| TOTAAL : | 903.552 | 838.094 | +7,81% | 12.953.567 | 12.589.250 | +2,89% |

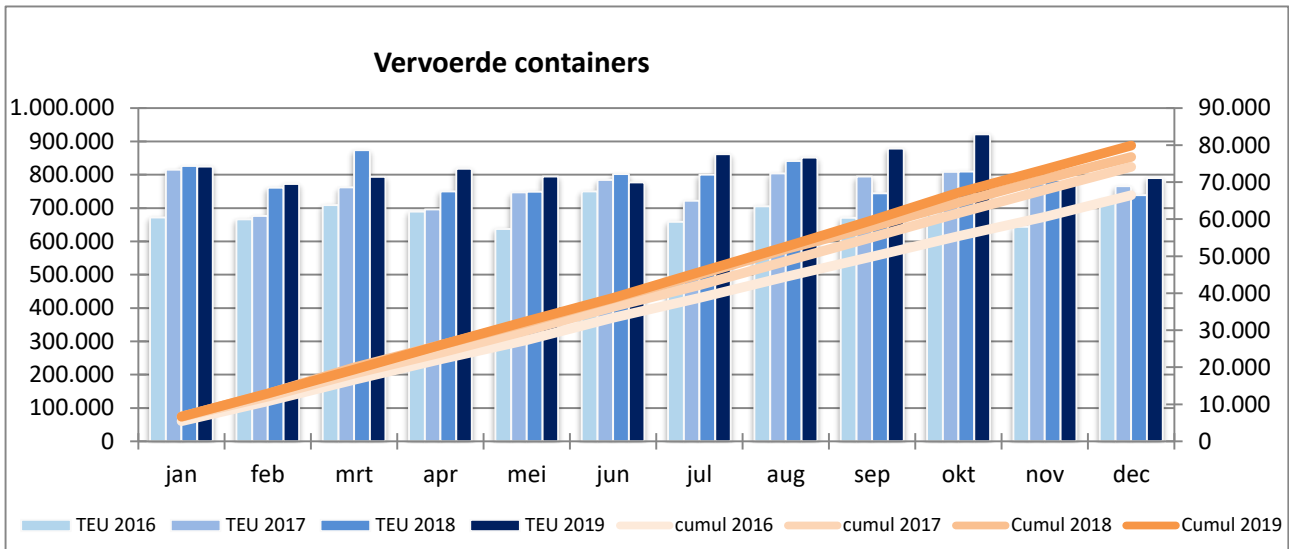
Lossingen

| omschrijving | december 2019 | december 2018 | verhouding | cumul 2019 | cumul 2018 | verhouding |
|------------------------|------------------|------------------|---------------|-------------------|-------------------|---------------|
| 0 landbouwproducten | 215.163 | 246.372 | -12,67% | 2.587.757 | 2.719.993 | -4,86% |
| 1 voedingswaren | 130.673 | 133.492 | -2,11% | 1.622.253 | 1.724.703 | -5,94% |
| 2 vaste brandstoffen | 12.432 | 8.348 | +48,92% | 176.989 | 172.252 | +2,75% |
| 3 petroleumproducten | 232.027 | 236.688 | -1,97% | 2.360.782 | 2.462.858 | -4,14% |
| 4 ertsen | 43.611 | 40.556 | +7,53% | 597.523 | 731.224 | -18,28% |
| 5 metaalproducten | 74.718 | 111.793 | -33,16% | 1.420.005 | 1.498.691 | -5,25% |
| 6 bouwmaterialen | 945.378 | 970.308 | -2,57% | 15.513.565 | 15.096.895 | +2,76% |
| 7 meststoffen | 59.968 | 56.706 | +5,75% | 939.518 | 1.140.541 | -17,63% |
| 8 nijverheidsproducten | 232.083 | 272.133 | -14,72% | 2.737.980 | 2.754.036 | -0,58% |
| 9 allerhande | 226.242 | 248.721 | -9,04% | 2.949.946 | 2.786.163 | +5,88% |
| TOTAAL : | 2.172.295 | 2.325.117 | -6,57% | 30.906.318 | 31.087.356 | -0,58% |



Aantal vervoerde containers (TEU)

| omschrijving | december 2019 | december 2018 | verhouding | cumul 2019 | cumul 2018 | verhouding |
|--------------------|------------------|------------------|------------|---------------|---------------|------------|
| geladen containers | 51.042 | 46.354 | +10,11% | 606.439 | 573.009 | +5,83% |
| ledige containers | 20.071 | 20.092 | -0,10% | 281.142 | 280.245 | +0,32% |
| Totaal | 71.113 | 66.446 | +7,02% | 887.581 | 853.253 | +4,02% |
| aantal schepen | 839 | 815 | +2,94% | 10.639 | 10.506 | +1,27% |
| tonnage containers | 654.799 | 627.211 | +4,40% | 8.000.302 | 7.692.845 | +4,00% |



Vervoerde TEU per corridor

| omschrijving | december 2019 | december 2018 | verhouding | cumul 2019 | cumul 2018 | verhouding |
|-----------------------|------------------|------------------|------------|---------------|---------------|------------|
| Albertkanaal | 45.388 | 41.301 | +9,90% | 576.467 | 526.690 | +9,45% |
| Kempische kanalen | 137 | 322 | -57,45% | 6.356 | 5.965 | +6,56% |
| ABC-as | 17.747 | 15.977 | +11,08% | 200.553 | 196.900 | +1,86% |
| Bovenshelde | 5.971 | 6.248 | -4,43% | 67.115 | 85.144 | -21,17% |
| Leie | 2.256 | 2.328 | -3,09% | 39.928 | 35.897 | +11,23% |
| Kanaal Gent- Oostende | 496 | 45 | +1002,22% | 930 | 1.732 | -46,30% |
| Ringvaart om Gent | 8.681 | 8.621 | +0,70% | 106.954 | 121.510 | -11,98% |

Vervoerde tonnage per verpakkingstype (ton)

| omschrijving | december 2019 | december 2018 | verhouding | cumul 2019 | cumul 2018 | verhouding |
|-----------------|------------------|------------------|---------------|-------------------|-------------------|---------------|
| droge bulk | 3.240.442 | 3.311.866 | -2,16% | 48.412.883 | 50.610.131 | -4,34% |
| vloeibare bulk | 1.167.437 | 1.246.720 | -6,36% | 12.911.852 | 12.935.114 | -0,18% |
| gas | 5.378 | 4.761 | +12,96% | 71.422 | 38.362 | +86,18% |
| containers | 654.799 | 627.211 | +4,40% | 8.000.302 | 7.692.845 | +4,00% |
| palletten | 38.798 | 69.681 | -44,32% | 783.170 | 804.612 | -2,66% |
| TOTAAL : | 5.106.854 | 5.260.239 | -2,92% | 70.179.629 | 72.081.064 | -2,64% |

Statistieken m.b.t. schepen

| omschrijving | december 2019 | december 2018 | verhouding | cumul 2019 | cumul 2018 | verhouding |
|-------------------------|------------------|------------------|------------|---------------|---------------|------------|
| aantal geladen schepen | 4.634 | 4.860 | -4,65% | 65.457 | 68.110 | -3,90% |
| aantal ledige schepen | 3.383 | 3.647 | -7,24% | 47.912 | 49.080 | -2,38% |
| aantal samenstellen | 7.127 | 7.436 | -4,16% | 93.831 | 96.395 | -2,66% |
| gem. ton per gel. schip | 1.102,04 | 1.082,35 | +1,82% | 1.072,15 | 1.058,30 | +1,31% |
| gem. afgel. weg per ton | 63,90 | 61,89 | +3,24% | 61,08 | 61,40 | -0,51% |

Herkomst en bestemming van de goederen (ton)

| landen | herkomst | | bestemming | |
|---------------------|-----------|--------|------------|--------|
| | tonnage | aantal | tonnage | aantal |
| België | | | | |
| De Vlaamse Waterweg | 903.552 | 1.352 | 2.172.295 | 2.213 |
| Haven van Antwerpen | 899.252 | 814 | 578.700 | 714 |
| Vlaanderen | 266.206 | 333 | 395.247 | 348 |
| Haven van Brussel | 69.295 | 92 | 253.458 | 160 |
| Haven van Zeebrugge | 23.661 | 50 | 65.554 | 80 |
| Wallonië | 789.159 | 754 | 733.319 | 568 |
| Nederland | 1.464.541 | 1.106 | 471.058 | 693 |
| Duitsland | 270.028 | 197 | 94.852 | 86 |
| Frankrijk | 345.954 | 543 | 298.665 | 380 |
| Engeland & Ierland | 3.100 | 1 | 21.654 | 12 |
| Andere landen | 72.106 | 27 | 22.052 | 15 |

Detailering bouwmaterialen

| omschrijving | december 2019 | december 2018 | verhouding | cumul 2019 | cumul 2018 | verhouding |
|---------------------|------------------|------------------|---------------|-------------------|-------------------|---------------|
| 61 - grondstoffen | 1.062.007 | 1.236.617 | -14,12% | 19.866.350 | 20.360.565 | -2,43% |
| 62 - Zouten | 77.179 | 84.676 | -8,85% | 992.569 | 951.414 | +4,33% |
| 63 - ruwe mineralen | 223.605 | 183.113 | +22,11% | 3.207.070 | 3.170.260 | +1,16% |
| 64 - Cement, kalk | 119.017 | 123.807 | -3,87% | 1.358.223 | 1.550.176 | -12,38% |
| 65 - Gips | 28.145 | 18.518 | +51,99% | 310.506 | 272.083 | +14,12% |
| 69 - bewerkte mat. | 69.276 | 75.431 | -8,16% | 1.239.296 | 1.451.516 | -14,62% |
| TOTAAL : | 1.579.229 | 1.722.162 | -8,30% | 26.974.014 | 27.756.014 | -2,82% |