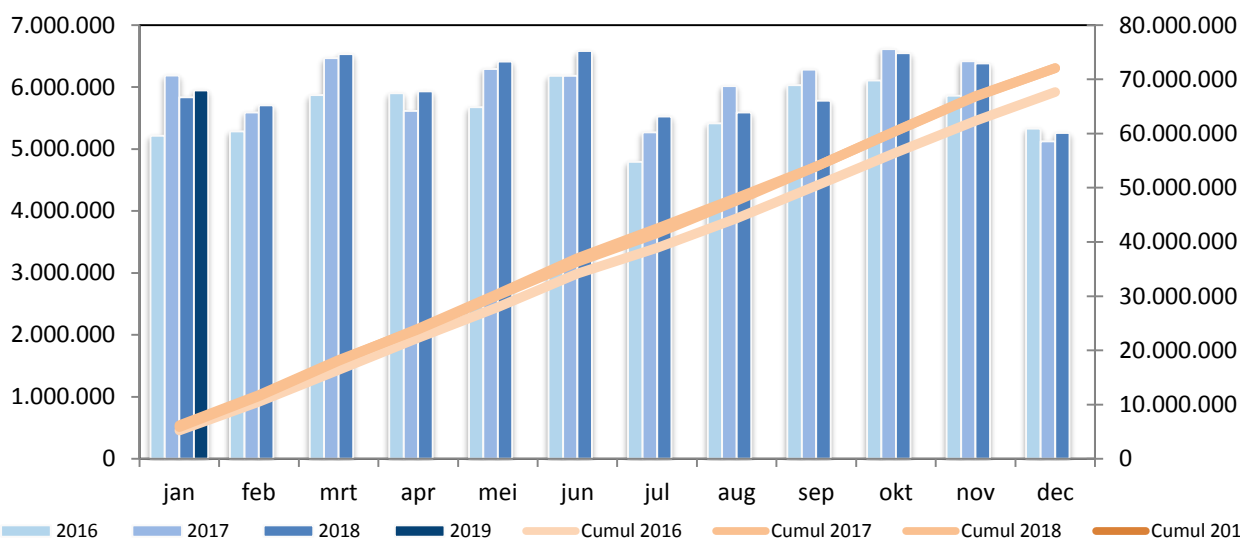


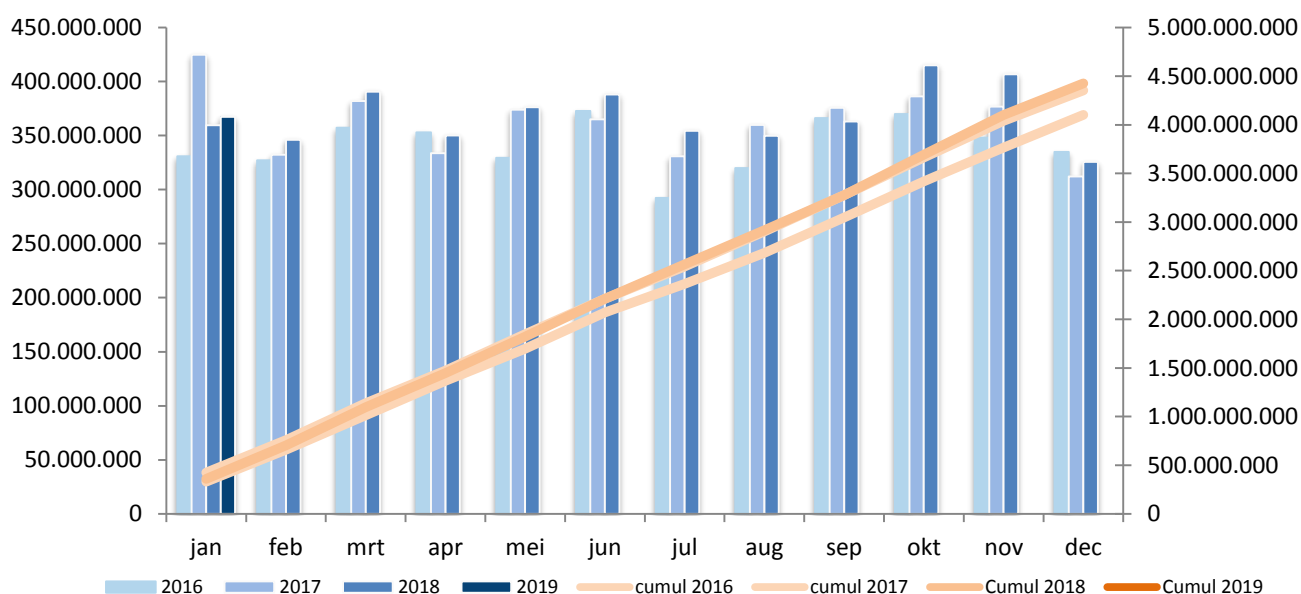
Algemeen

| omschrijving | januari 2019 | januari 2018 | verhouding | cumul 2019 | cumul 2018 | verhouding |
|----------------------------|-----------------|-----------------|------------|---------------|---------------|------------|
| tonkilometer (tonkm) | 367.326.060 | 359.728.406 | +2,11% | 367.326.060 | 359.728.406 | +2,11% |
| tonnage (ton) | 5.944.865 | 5.837.299 | +1,84% | 5.944.865 | 5.837.299 | +1,84% |
| ladingen (ton) | 1.123.793 | 1.072.745 | +4,76% | 1.123.793 | 1.072.745 | +4,76% |
| lossingen (ton) | 2.518.354 | 2.399.761 | +4,94% | 2.518.354 | 2.399.761 | +4,94% |
| vervoerde containers (TEU) | 74.182 | 74.406 | -0,30% | 74.182 | 74.406 | -0,30% |

Vervoerde tonnage

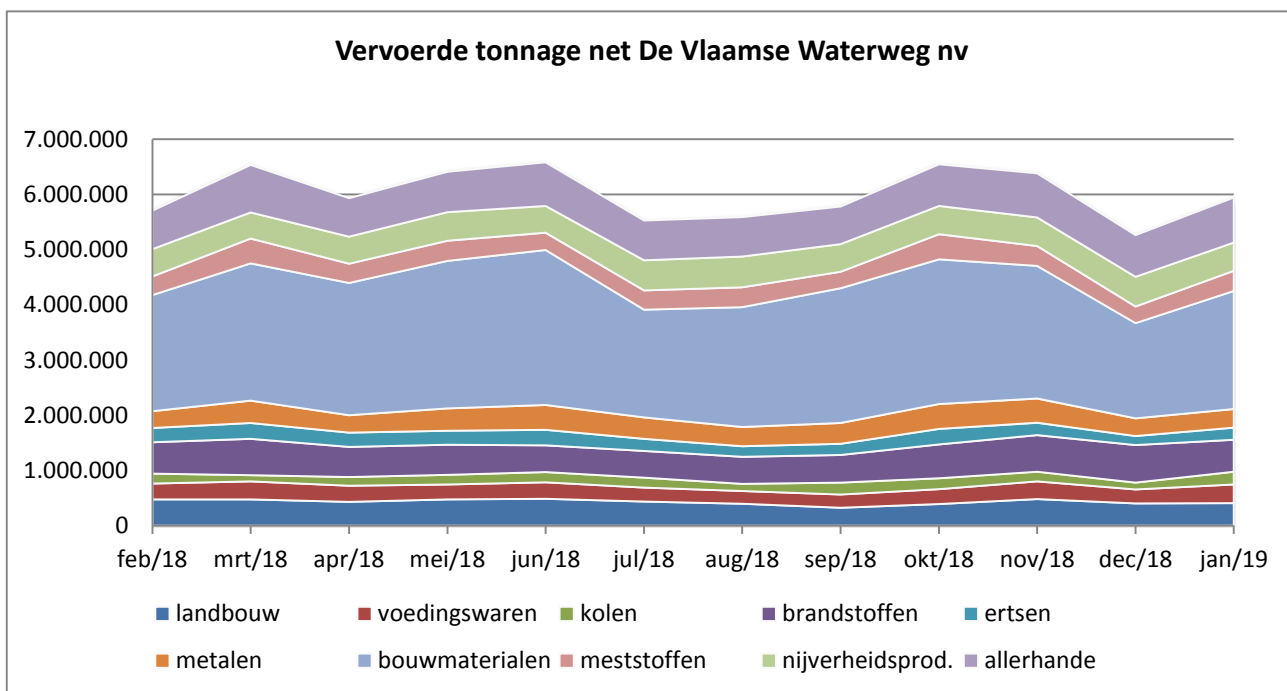


Tonkilometer



Vervoerde tonnage per productgroep (ton)

| omschrijving | januari 2019 | januari 2018 | verhouding | cumul 2019 | cumul 2018 | verhouding |
|------------------------|------------------|------------------|---------------|------------------|------------------|---------------|
| 0 landbouwproducten | 411.724 | 477.113 | -13,71% | 411.724 | 477.113 | -13,71% |
| 1 voedingswaren | 337.056 | 320.983 | +5,01% | 337.056 | 320.983 | +5,01% |
| 2 vaste brandstoffen | 230.025 | 149.213 | +54,16% | 230.025 | 149.213 | +54,16% |
| 3 petroleumproducten | 577.024 | 580.196 | -0,55% | 577.024 | 580.196 | -0,55% |
| 4 ertsen | 219.295 | 278.130 | -21,15% | 219.295 | 278.130 | -21,15% |
| 5 metaalproducten | 339.246 | 374.811 | -9,49% | 339.246 | 374.811 | -9,49% |
| 6 bouwmaterialen | 2.137.624 | 1.987.587 | +7,55% | 2.137.624 | 1.987.587 | +7,55% |
| 7 meststoffen | 364.637 | 370.909 | -1,69% | 364.637 | 370.909 | -1,69% |
| 8 nijverheidsproducten | 509.794 | 556.042 | -8,32% | 509.794 | 556.042 | -8,32% |
| 9 allerhande | 818.440 | 742.315 | +10,26% | 818.440 | 742.315 | +10,26% |
| TOTAAL : | 5.944.865 | 5.837.299 | +1,84% | 5.944.865 | 5.837.299 | +1,84% |



Vervoerde tonnage per corridor

| omschrijving | januari 2019 | januari 2018 | verhouding | cumul 2019 | cumul 2018 | verhouding |
|--------------------------|-----------------|-----------------|------------|---------------|---------------|------------|
| Albertkanaal | 3.164.831 | 3.113.250 | +1,66% | 3.164.831 | 3.113.250 | +1,66% |
| Kempische kanalen | 332.605 | 284.460 | +16,93% | 332.605 | 284.460 | +16,93% |
| ABC-as* | 946.611 | 1.022.234 | -7,40% | 946.611 | 1.022.234 | -7,40% |
| Bovenschedde | 817.122 | 831.191 | -1,69% | 817.122 | 831.191 | -1,69% |
| Leie** | 937.700 | 901.061 | +4,07% | 937.700 | 901.061 | +4,07% |
| Kanaal Gent- Oostende*** | 139.300 | 114.652 | +21,50% | 139.300 | 114.652 | +21,50% |
| Ringvaart om Gent | 1.740.797 | 1.752.964 | -0,69% | 1.740.797 | 1.752.964 | -0,69% |

* Zeekanaal Brussel-Schelde + Kanaal naar Charleroi

** Aflidingskanaal van de Leie + Leie + Grensleie

*** Vanaf splijting aflidingskanaal van de Leie tot Oostende

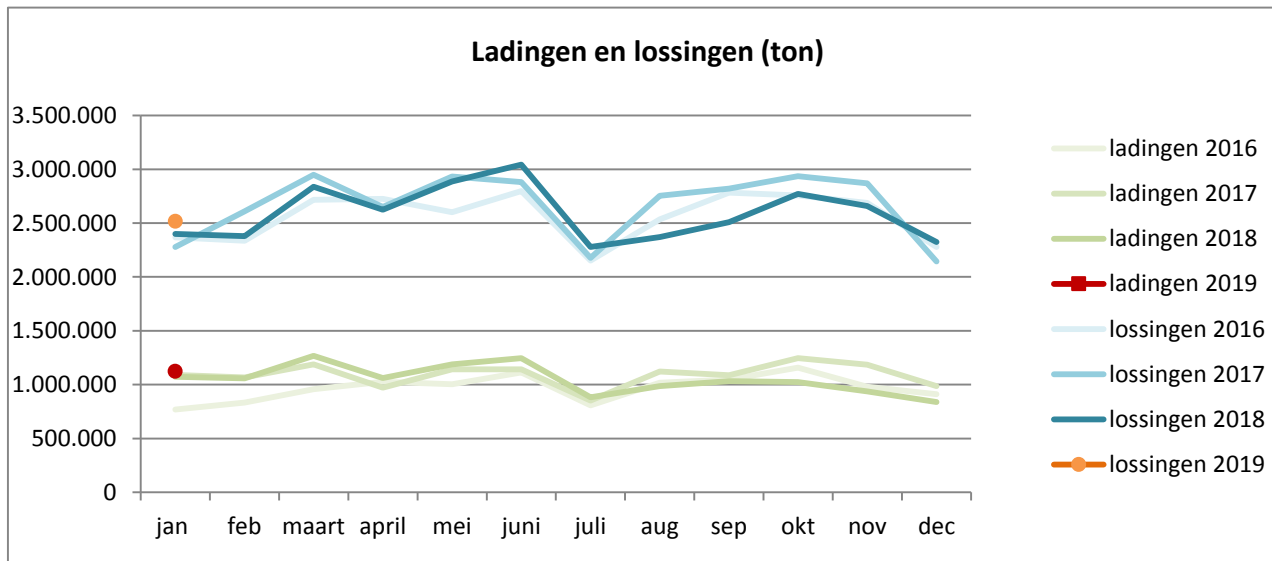
Ladingen en lossingen op het net De Vlaamse Waterweg nv (ton)

Ladingen

| omschrijving | januari 2019 | januari 2018 | verhouding | cumul 2019 | cumul 2018 | verhouding |
|------------------------|------------------|------------------|---------------|------------------|------------------|---------------|
| 0 landbouwproducten | 24.984 | 34.019 | -26,56% | 24.984 | 34.019 | -26,56% |
| 1 voedingswaren | 30.856 | 38.606 | -20,07% | 30.856 | 38.606 | -20,07% |
| 2 vaste brandstoffen | 6.339 | | | 6.339 | | |
| 3 petroleumproducten | 23.001 | 4.916 | +367,88% | 23.001 | 4.916 | +367,88% |
| 4 ertsen | 69.982 | 67.906 | +3,06% | 69.982 | 67.906 | +3,06% |
| 5 metaalproducten | 20.770 | 18.393 | +12,92% | 20.770 | 18.393 | +12,92% |
| 6 bouwmaterialen | 477.554 | 456.932 | +4,51% | 477.554 | 456.932 | +4,51% |
| 7 meststoffen | 35.889 | 22.791 | +57,47% | 35.889 | 22.791 | +57,47% |
| 8 nijverheidsproducten | 99.925 | 89.707 | +11,39% | 99.925 | 89.707 | +11,39% |
| 9 allerhande | 334.493 | 339.475 | -1,47% | 334.493 | 339.475 | -1,47% |
| TOTAAL : | 1.123.793 | 1.072.745 | +4,76% | 1.123.793 | 1.072.745 | +4,76% |

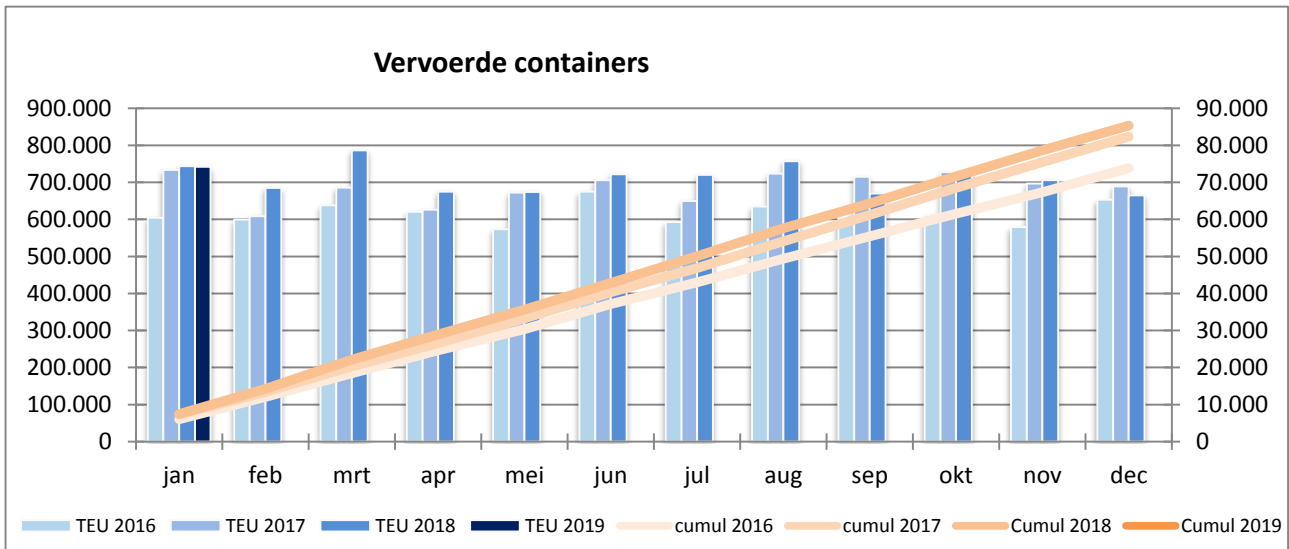
Lossingen

| omschrijving | januari 2019 | januari 2018 | verhouding | cumul 2019 | cumul 2018 | verhouding |
|------------------------|------------------|------------------|---------------|------------------|------------------|---------------|
| 0 landbouwproducten | 237.640 | 240.254 | -1,09% | 237.640 | 240.254 | -1,09% |
| 1 voedingswaren | 150.811 | 162.404 | -7,14% | 150.811 | 162.404 | -7,14% |
| 2 vaste brandstoffen | 21.001 | 10.424 | +101,47% | 21.001 | 10.424 | +101,47% |
| 3 petroleumproducten | 218.058 | 216.198 | +0,86% | 218.058 | 216.198 | +0,86% |
| 4 ertsen | 36.998 | 76.311 | -51,52% | 36.998 | 76.311 | -51,52% |
| 5 metaalproducten | 107.223 | 112.098 | -4,35% | 107.223 | 112.098 | -4,35% |
| 6 bouwmaterialen | 1.188.439 | 1.005.661 | +18,17% | 1.188.439 | 1.005.661 | +18,17% |
| 7 meststoffen | 71.374 | 111.124 | -35,77% | 71.374 | 111.124 | -35,77% |
| 8 nijverheidsproducten | 221.293 | 251.723 | -12,09% | 221.293 | 251.723 | -12,09% |
| 9 allerhande | 265.517 | 213.564 | +24,33% | 265.517 | 213.564 | +24,33% |
| TOTAAL : | 2.518.354 | 2.399.761 | +4,94% | 2.518.354 | 2.399.761 | +4,94% |



Aantal vervoerde containers (TEU)

| omschrijving | januari 2019 | januari 2018 | verhouding | cumul 2019 | cumul 2018 | verhouding |
|--------------------|-----------------|-----------------|------------|---------------|---------------|------------|
| geladen containers | 49.360 | 48.250 | +2,30% | 49.360 | 48.250 | +2,30% |
| ledige containers | 24.822 | 26.157 | -5,10% | 24.822 | 26.157 | -5,10% |
| Totaal | 74.182 | 74.406 | -0,30% | 74.182 | 74.406 | -0,30% |
| aantal schepen | 868 | 927 | -6,36% | 868 | 927 | -6,36% |
| tonnage containers | 658.433 | 658.469 | -0,01% | 658.433 | 658.469 | -0,01% |



Vervoerde TEU per corridor

| omschrijving | januari 2019 | januari 2018 | verhouding | cumul 2019 | cumul 2018 | verhouding |
|-----------------------|-----------------|-----------------|------------|---------------|---------------|------------|
| Albertkanaal | 46.359 | 46.990 | -1,34% | 46.359 | 46.990 | -1,34% |
| Kempische kanalen | 735 | 449 | +63,70% | 735 | 449 | +63,70% |
| ABC-as | 17.214 | 16.216 | +6,15% | 17.214 | 16.216 | +6,15% |
| Bovenschedde | 6.092 | 7.988 | -23,73% | 6.092 | 7.988 | -23,73% |
| Leie | 3.950 | 2.714 | +45,54% | 3.950 | 2.714 | +45,54% |
| Kanaal Gent- Oostende | 130 | 148 | -12,16% | 130 | 148 | -12,16% |
| Ringvaart om Gent | 10.147 | 10.846 | -6,44% | 10.147 | 10.846 | -6,44% |

Vervoerde tonnage per verpakkingstype (ton)

| omschrijving | januari 2019 | januari 2018 | verhouding | cumul 2019 | cumul 2018 | verhouding |
|-----------------|------------------|------------------|---------------|------------------|------------------|---------------|
| droge bulk | 4.060.555 | 4.012.906 | +1,19% | 4.060.555 | 4.012.906 | +1,19% |
| vloeibare bulk | 1.153.917 | 1.112.198 | +3,75% | 1.153.917 | 1.112.198 | +3,75% |
| gas | 2.374 | 1.050 | +126,10% | 2.374 | 1.050 | +126,10% |
| containers | 658.433 | 658.469 | -0,01% | 658.433 | 658.469 | -0,01% |
| palletten | 69.586 | 52.676 | +32,10% | 69.586 | 52.676 | +32,10% |
| TOTAAL : | 5.944.865 | 5.837.299 | +1,84% | 5.944.865 | 5.837.299 | +1,84% |

Statistieken m.b.t. schepen

| omschrijving | januari 2019 | januari 2018 | verhouding | cumul 2019 | cumul 2018 | verhouding |
|-------------------------|-----------------|-----------------|------------|---------------|---------------|------------|
| aantal geladen schepen | 5.970 | 5.809 | +2,77% | 5.970 | 5.809 | +2,77% |
| aantal ledige schepen | 3.756 | 3.675 | +2,20% | 3.756 | 3.675 | +2,20% |
| aantal samenstellen | 8.540 | 8.378 | +1,93% | 8.540 | 8.378 | +1,93% |
| gem. ton per gel. schip | 995,79 | 1.004,87 | -0,90% | 995,79 | 1.004,87 | -0,90% |
| gem. afgel. weg per ton | 61,79 | 61,63 | +0,26% | 61,79 | 61,63 | +0,26% |

Herkomst en bestemming van de goederen (ton)

| landen | herkomst | | bestemming | |
|---------------------|-----------|--------|------------|--------|
| | tonnage | aantal | tonnage | aantal |
| België | | | | |
| De Vlaamse Waterweg | 1.123.793 | 1.567 | 2.518.354 | 2.523 |
| Haven van Antwerpen | 1.013.654 | 924 | 656.611 | 808 |
| Vlaanderen | 292.603 | 370 | 376.518 | 368 |
| Haven van Brussel | 69.165 | 70 | 287.524 | 185 |
| Haven van Zeebrugge | 27.338 | 48 | 56.656 | 75 |
| Wallonië | 779.310 | 722 | 897.675 | 663 |
| Nederland | 1.834.176 | 1.385 | 684.684 | 745 |
| Duitsland | 280.272 | 187 | 118.721 | 109 |
| Frankrijk | 449.580 | 674 | 314.929 | 473 |
| Engeland & Ierland | 8.171 | 3 | 20.329 | 11 |
| Andere landen | 66.803 | 20 | 12.864 | 10 |

Detailering bouwmaterialen

| omschrijving | januari 2019 | januari 2018 | verhouding | cumul 2019 | cumul 2018 | verhouding |
|---------------------|------------------|------------------|---------------|------------------|------------------|---------------|
| 61 - grondstoffen | 1.592.047 | 1.486.510 | +7,10% | 1.592.047 | 1.486.510 | +7,10% |
| 62 - Zouten | 90.541 | 105.833 | -14,45% | 90.541 | 105.833 | -14,45% |
| 63 - ruwe mineralen | 246.321 | 168.689 | +46,02% | 246.321 | 168.689 | +46,02% |
| 64 - Cement, kalk | 96.474 | 122.912 | -21,51% | 96.474 | 122.912 | -21,51% |
| 65 - Gips | 22.084 | 15.815 | +39,64% | 22.084 | 15.815 | +39,64% |
| 69 - bewerkte mat. | 90.157 | 87.828 | +2,65% | 90.157 | 87.828 | +2,65% |
| TOTAAL : | 2.137.624 | 1.987.587 | +7,55% | 2.137.624 | 1.987.587 | +7,55% |