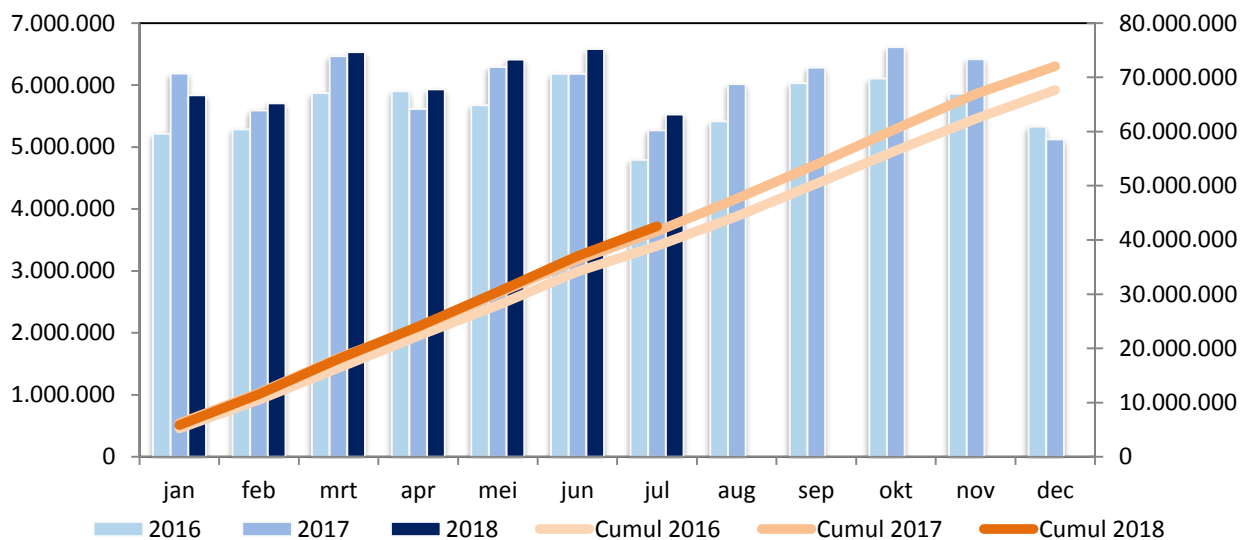
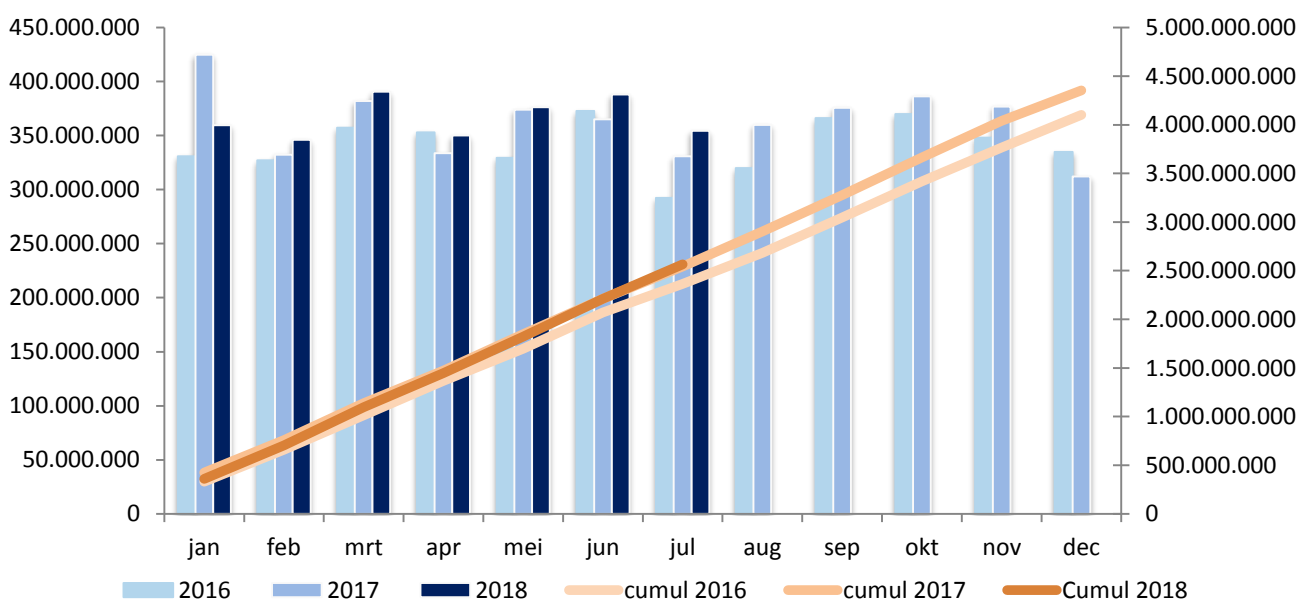


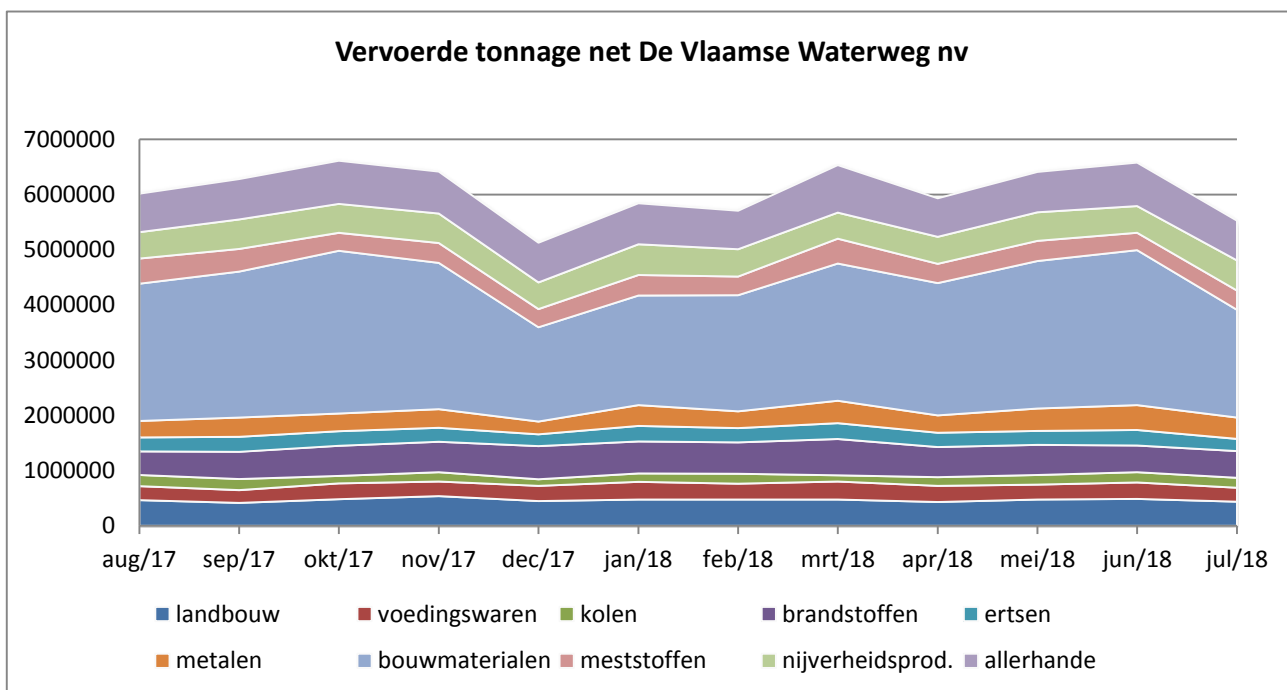
Algemeen

| omschrijving | juli 2018 | juli 2017 | verhouding | cumul 2018 | cumul 2017 | verhouding |
|----------------------------|--------------|--------------|------------|---------------|---------------|------------|
| tonkilometer (tonkm) | 354.473.634 | 330.849.830 | +7,14% | 2.565.296.392 | 2.542.571.679 | +0,89% |
| tonnage (ton) | 5.525.028 | 5.270.808 | +4,82% | 42.525.242 | 41.600.236 | +2,22% |
| ladingen (ton) | 881.679 | 851.715 | +3,52% | 7.774.675 | 7.450.250 | +4,35% |
| lossingen (ton) | 2.278.881 | 2.178.352 | +4,61% | 18.448.195 | 18.480.852 | -0,18% |
| vervoerde containers (TEU) | 72.020 | 64.954 | +10,88% | 500.634 | 468.292 | +6,91% |

Vervoerde tonnage

Tonkilometer


Vervoerde tonnage per productgroep (ton)

| omschrijving | juli 2018 | juli 2017 | verhouding | cumul 2018 | cumul 2017 | verhouding |
|------------------------|------------------|------------------|---------------|-------------------|-------------------|---------------|
| 0 landbouwproducten | 435.540 | 524.866 | -17,02% | 3.261.970 | 3.449.120 | -5,43% |
| 1 voedingswaren | 254.598 | 263.368 | -3,33% | 2.050.123 | 1.883.080 | +8,87% |
| 2 vaste brandstoffen | 177.513 | 117.484 | +51,10% | 1.133.669 | 967.169 | +17,22% |
| 3 petroleumproducten | 484.216 | 510.051 | -5,07% | 3.867.272 | 3.768.459 | +2,62% |
| 4 ertsen | 223.054 | 264.684 | -15,73% | 1.839.106 | 1.891.078 | -2,75% |
| 5 metaalproducten | 386.034 | 299.070 | +29,08% | 2.640.537 | 2.393.731 | +10,31% |
| 6 bouwmaterialen | 1.950.965 | 1.739.200 | +12,18% | 16.403.265 | 16.118.717 | +1,77% |
| 7 meststoffen | 349.411 | 405.791 | -13,89% | 2.526.811 | 2.793.755 | -9,56% |
| 8 nijverheidsproducten | 543.387 | 488.085 | +11,33% | 3.561.456 | 3.515.234 | +1,31% |
| 9 allerhande | 720.310 | 658.209 | +9,43% | 5.241.033 | 4.819.893 | +8,74% |
| TOTAAL : | 5.525.028 | 5.270.808 | +4,82% | 42.525.242 | 41.600.236 | +2,22% |



Vervoerde tonnage per corridor

| omschrijving | juli 2018 | juli 2017 | verhouding | cumul 2018 | cumul 2017 | verhouding |
|--------------------------|--------------|--------------|------------|---------------|---------------|------------|
| Albertkanaal | 3.015.962 | 2.816.491 | +7,08% | 22.374.316 | 22.766.404 | -1,72% |
| Kempische kanalen | 275.858 | 281.531 | -2,02% | 2.245.619 | 2.269.308 | -1,04% |
| ABC-as* | 853.542 | 778.308 | +9,67% | 7.844.143 | 6.919.668 | +13,36% |
| Bovenschedde | 767.787 | 733.261 | +4,71% | 6.366.903 | 5.296.937 | +20,20% |
| Leie** | 873.351 | 879.989 | -0,75% | 5.973.920 | 6.358.815 | -6,05% |
| Kanaal Gent- Oostende*** | 46.326 | 113.511 | -59,19% | 789.844 | 894.591 | -11,71% |
| Ringvaart om Gent | 1.682.653 | 1.657.426 | +1,52% | 12.484.445 | 11.908.069 | +4,84% |

* Zeekanaal Brussel-Schelde + Kanaal naar Charleroi

** Aflidingskanaal van de Leie + Leie + Grensleie

*** Vanaf splijting aflidingskanaal van de Leie tot Oostende

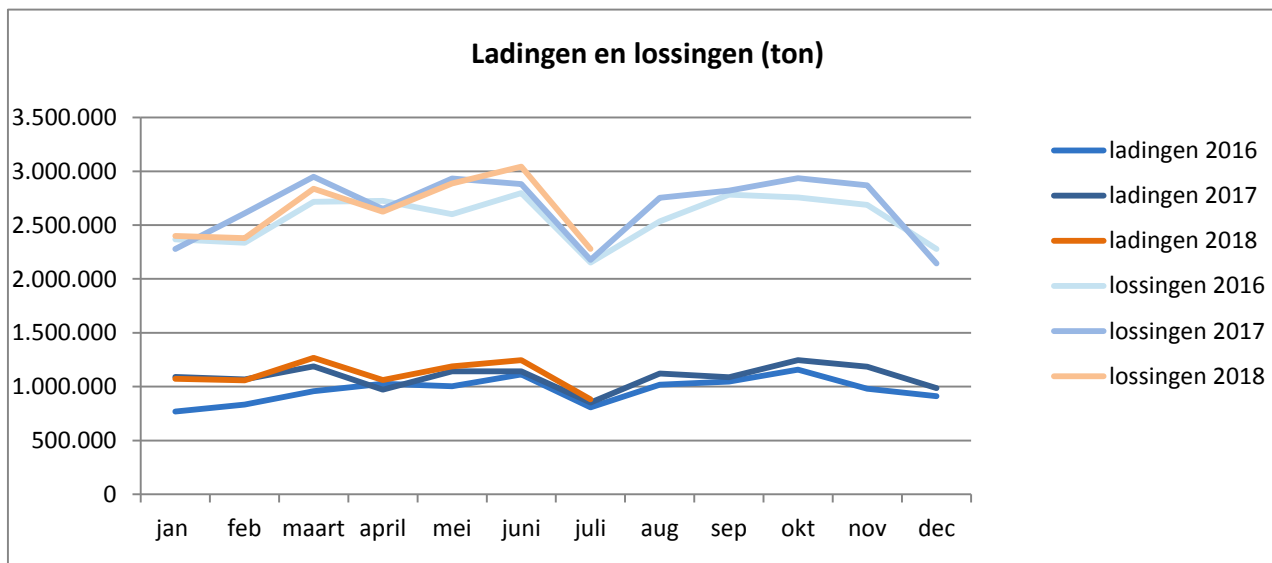
Ladingen en lossingen op het net De Vlaamse Waterweg nv (ton)

Ladingen

| omschrijving | juli 2018 | juli 2017 | verhouding | cumul 2018 | cumul 2017 | verhouding |
|------------------------|----------------|----------------|---------------|------------------|------------------|---------------|
| 0 landbouwproducten | 17.766 | 19.151 | -7,23% | 169.612 | 159.795 | +6,14% |
| 1 voedingswaren | 28.344 | 39.736 | -28,67% | 235.042 | 227.641 | +3,25% |
| 2 vaste brandstoffen | 2.472 | 0 | | 31.194 | 26.514 | +17,65% |
| 3 petroleumproducten | 17.794 | 19.021 | -6,45% | 93.331 | 96.743 | -3,53% |
| 4 ertsen | 55.190 | 51.249 | +7,69% | 449.412 | 522.418 | -13,97% |
| 5 metaalproducten | 26.986 | 19.831 | +36,08% | 192.309 | 113.243 | +69,82% |
| 6 bouwmaterialen | 294.673 | 305.291 | -3,48% | 3.499.500 | 3.344.115 | +4,65% |
| 7 meststoffen | 20.781 | 33.021 | -37,07% | 171.657 | 254.505 | -32,55% |
| 8 nijverheidsproducten | 95.379 | 67.240 | +41,85% | 591.907 | 523.476 | +13,07% |
| 9 allerhande | 322.294 | 297.175 | +8,45% | 2.340.711 | 2.181.800 | +7,28% |
| TOTAAL : | 881.679 | 851.715 | +3,52% | 7.774.675 | 7.450.250 | +4,35% |

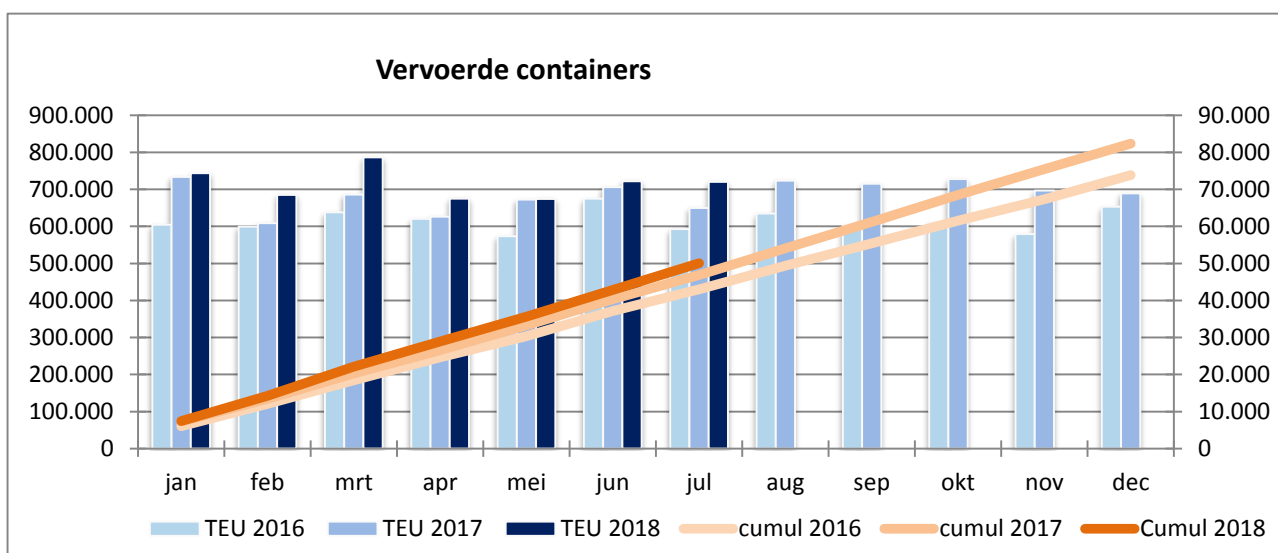
Lossingen

| omschrijving | juli 2018 | juli 2017 | verhouding | cumul 2018 | cumul 2017 | verhouding |
|------------------------|------------------|------------------|---------------|-------------------|-------------------|---------------|
| 0 landbouwproducten | 206.759 | 249.249 | -17,05% | 1.583.357 | 1.872.849 | -15,46% |
| 1 voedingswaren | 137.887 | 140.053 | -1,55% | 1.018.541 | 972.596 | +4,72% |
| 2 vaste brandstoffen | 2.430 | 2.384 | +1,93% | 102.104 | 134.821 | -24,27% |
| 3 petroleumproducten | 176.671 | 157.739 | +12,00% | 1.437.648 | 1.336.730 | +7,55% |
| 4 ertsen | 49.659 | 47.918 | +3,63% | 500.240 | 445.107 | +12,39% |
| 5 metaalproducten | 131.456 | 98.168 | +33,91% | 903.375 | 778.356 | +16,06% |
| 6 bouwmaterialen | 1.030.679 | 864.111 | +19,28% | 8.971.053 | 8.832.722 | +1,57% |
| 7 meststoffen | 73.314 | 132.098 | -44,50% | 765.395 | 845.900 | -9,52% |
| 8 nijverheidsproducten | 248.380 | 254.484 | -2,40% | 1.534.914 | 1.675.552 | -8,39% |
| 9 allerhande | 221.646 | 232.148 | -4,52% | 1.631.568 | 1.586.219 | +2,86% |
| TOTAAL : | 2.278.881 | 2.178.352 | +4,61% | 18.448.195 | 18.480.852 | -0,18% |



Aantal vervoerde containers (TEU)

| omschrijving | juli 2018 | juli 2017 | verhouding | cumul 2018 | cumul 2017 | verhouding |
|--------------------|--------------|--------------|------------|---------------|---------------|------------|
| geladen containers | 48.379 | 44.448 | +8,84% | 338.077 | 310.324 | +8,94% |
| ledige containers | 23.641 | 20.506 | +15,29% | 162.558 | 157.968 | +2,91% |
| Totaal | 72.020 | 64.954 | +10,88% | 500.634 | 468.292 | +6,91% |
| aantal schepen | 886 | 849 | +4,36% | 6.256 | 5.969 | +4,81% |
| tonnage containers | 630.992 | 576.743 | +9,41% | 4.511.776 | 4.166.533 | +8,29% |



Vervoerde TEU per corridor

| omschrijving | juli 2018 | juli 2017 | verhouding | cumul 2018 | cumul 2017 | verhouding |
|-----------------------|--------------|--------------|------------|---------------|---------------|------------|
| Albertkanaal | 44.228 | 41.737 | +5,97% | 309.557 | 299.143 | +3,48% |
| Kempische kanalen | 588 | 566 | +3,89% | 7.536 | 7.505 | +0,41% |
| ABC-as | 16.530 | 13.983 | +18,22% | 112.708 | 107.208 | +5,13% |
| Bovenshelde | 6.963 | 6.761 | +2,98% | 51.023 | 41.027 | +24,36% |
| Leie | 3.255 | 2.146 | +51,68% | 21.170 | 18.731 | +13,02% |
| Kanaal Gent- Oostende | 0 | 0 | - | 1.174 | 507 | +131,56% |
| Ringvaart om Gent | 10.150 | 8.882 | +14,27% | 72.499 | 59.669 | +21,50% |

Vervoerde tonnage per verpakkingstype (ton)

| omschrijving | juli 2018 | juli 2017 | verhouding | cumul 2018 | cumul 2017 | verhouding |
|-----------------|------------------|------------------|---------------|-------------------|-------------------|---------------|
| droge bulk | 3.775.559 | 3.679.915 | +2,60% | 30.235.686 | 30.104.431 | +0,44% |
| vloeibare bulk | 1.018.264 | 959.558 | +6,12% | 7.324.746 | 6.999.412 | +4,65% |
| gas | 6.268 | 9.091 | -31,05% | 14.204 | 24.369 | -41,71% |
| containers | 630.992 | 576.743 | +9,41% | 4.511.776 | 4.166.533 | +8,29% |
| palletten | 93.945 | 45.501 | +106,47% | 438.830 | 305.491 | +43,65% |
| TOTAAL : | 5.525.028 | 5.270.808 | +4,82% | 42.525.242 | 41.600.236 | +2,22% |

Statistieken m.b.t. schepen

| omschrijving | juli 2018 | juli 2017 | verhouding | cumul 2018 | cumul 2017 | verhouding |
|-------------------------|--------------|--------------|------------|---------------|---------------|------------|
| aantal geladen schepen | 5.644 | 5.325 | +5,99% | 42.025 | 41.398 | +1,51% |
| aantal ledige schepen | 3.242 | 3.675 | -11,78% | 26.840 | 27.948 | -3,96% |
| aantal samenstellen | 7.901 | 7.764 | +1,76% | 60.992 | 61.906 | -1,48% |
| gem. ton per gel. schip | 978,92 | 989,82 | -1,10% | 1.011,90 | 1.004,89 | +0,70% |
| gem. afgel. weg per ton | 64,16 | 62,77 | +2,21% | 60,32 | 61,12 | -1,30% |

Herkomst en bestemming van de goederen (ton)

| landen | herkomst | | bestemming | |
|---------------------|-----------|--------|------------|--------|
| | tonnage | aantal | tonnage | aantal |
| België | | | | |
| De Vlaamse Waterweg | 881.679 | 1.253 | 3.043.373 | 2.904 |
| Haven van Antwerpen | 764.757 | 836 | 626.105 | 796 |
| Vlaanderen | 268.814 | 337 | 302.970 | 293 |
| Haven van Brussel | 51.546 | 54 | 359.551 | 220 |
| Haven van Zeebrugge | 18.491 | 43 | 61.726 | 76 |
| Wallonië | 893.031 | 747 | 842.225 | 619 |
| Nederland | 1.920.933 | 1.439 | 862.473 | 867 |
| Duitsland | 253.707 | 216 | 104.921 | 104 |
| Frankrijk | 399.059 | 698 | 335.592 | 459 |
| Engeland & Ierland | 4.773 | 2 | 16.133 | 9 |
| Andere landen | 68.238 | 19 | 25.827 | 13 |

Detailering bouwmaterialen

| omschrijving | juli 2018 | juli 2017 | verhouding | cumul 2018 | cumul 2017 | verhouding |
|---------------------|------------------|------------------|----------------|-------------------|-------------------|---------------|
| 61 - grondstoffen | 1.317.018 | 1.255.494 | +4,90% | 12.164.412 | 11.860.229 | +2,56% |
| 62 - Zouten | 106.637 | 46.728 | +128,21% | 576.075 | 370.394 | +55,53% |
| 63 - ruwe mineralen | 205.600 | 163.603 | +25,67% | 1.715.596 | 1.661.914 | +3,23% |
| 64 - Cement, kalk | 134.930 | 151.422 | -10,89% | 918.337 | 1.056.442 | -13,07% |
| 65 - Gips | 33.852 | 19.687 | +71,95% | 177.290 | 155.356 | +14,12% |
| 69 - bewerkte mat. | 152.928 | 102.266 | +49,54% | 851.555 | 1.014.382 | -16,05% |
| TOTAAL : | 1.950.965 | 1.739.200 | +12,18% | 16.403.265 | 16.118.717 | +1,77% |